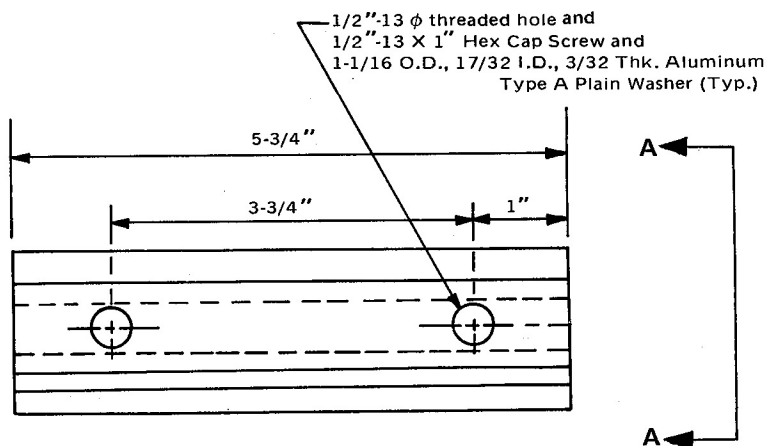


A-A



CLAMP BAR DETAILS

SPECIFICATIONS

Aluminum clamp bars shall meet the requirements of A.S.T.M. B221, alloy 6061-T6 or alloy 6351-T5.

Cap screws shall meet the mechanical requirements of A.S.T.M. A276, Type 430 and the dimensional requirements of A.N.S.I. B18.2.1. Both clamp bar and cap screw shall be threaded to A.N.S.I. B1.1, UNC, Class 2 tolerance.

Washers shall meet the mechanical requirements of A.S.T.M. B209, alloy 2024-T3 alclad and the dimensional requirements of A.N.S.I. B27.2 for Type A Plain Washers.

Dimensional tolerances not shown or implied are intended to be those consistent with the proper functioning of the part, including its appearance and accepted manufacturing practice.

INTENDED USE

This clamp bar connects $4-3/4'' \times 3-3/4''$ and $4-3/4'' \times 4''$ semi-ellipse rails to posts in bridge railing designs BR1 (Aluminum) Type C and BR2A (Aluminum) Type C.

**$4-3/4'' \times 3-3/4''$ AND $4-3/4'' \times 4''$
SEMI-ELLIPSE RAIL CLAMP BAR
($5-3/4''$ LONG)**

HM-TF-13

STANDARD

F-20-73